



TECHNICAL DATA SHEET

EPC - Eupen Passive Components

Kabelwerk

EUPEN AG

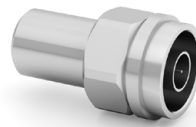
Rev.: 05/2024-10-30

cable

EPC DL - Dummy Loads

FEATURES and BENEFITS

- Broadband
- Low VSWR
- 1, 2 or 10 W



DL-F2-01



DL-F1-01



DL-F2-05



DL-F10-01

SPECIFICATIONS

• Part Number N-male (EPC)	DL-F1-01	DL-F2-01	DL-F10-01
• Part Number 716-male (EPC)	-	DL-F2-03	DL-F10-03
• Part Number 4.3-10 male (EPC)	-	DL-F2-05	DL-F10-05
• Frequency Range	0 - 7.5 GHz	0 - 7.5 GHz	0 - 7.5 GHz
• Max. Input power	1 W	2 W	10 W
• Impedance		Nom. 50 Ω	
• Return Loss	>28 dB/7.5 GHz	>28 dB/7.5 GHz	>28 dB/7.5 GHz
• Climatic category acc. to IEC 60068 - 1		55/155/56	
• Dimensions L x Ø mm	35.4 x 22	N-Type: 35.4 x 22 7-16 Type: 37.3 x 28 4.3-10 Type: 36 x 28	74.0 x 52.0